



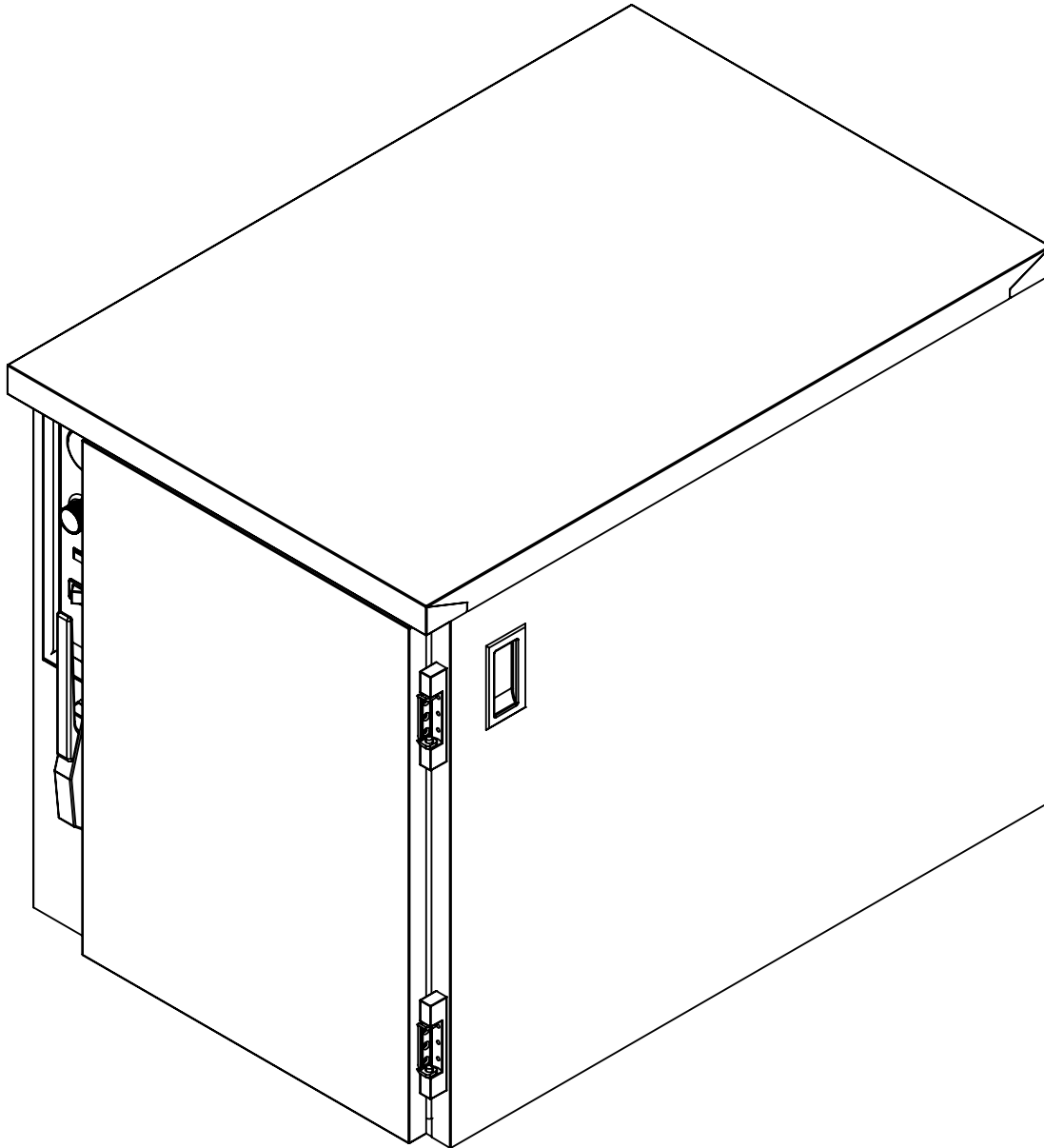
5599 Highway 31 West
Portland, TN 37148
(615)325-2774

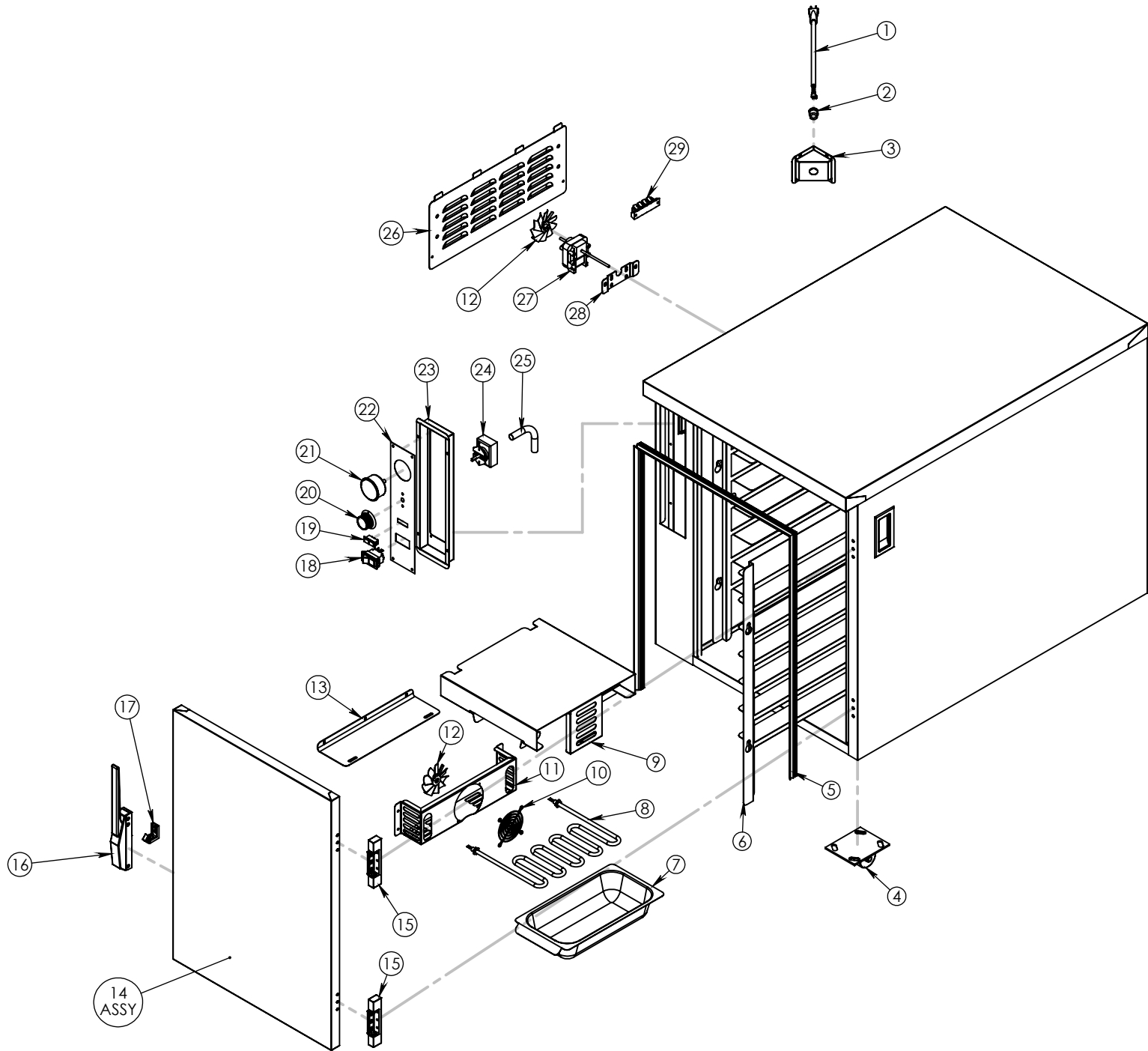
TS-1633-14

Pg.1 . TITLE PAGE

Pg.3 . TS-1633-14 BOM

Pg.2 . TS-1633-14





DRAWING #: **TS-1633-14**

DESCRIPTION: **SERVER - 14 16" PIZZAS**

DRAWN BY: DP

LAST SAVED BY: ashton92

ITEM NO.	QTY.	PART NO.	DESCRIPTION
1	1	CRDSET20-115	CORD 12' 115 VOLT 5-20P 12GA 3 WIRE
2	1	BSH STRN 3	STRAIN RELIEF FOR 15 AMP CORD
3	1	69729	HUMI TRI-CORD BRCKET DD .672X .750
4	4	Z-600-2416	CSTR 2 SB-2 ADAPTER ASSY
5	1	GSKT-D-27-000X20-000	SILICONE DR GASKET D 27X20
6	2	53277	TS-1633-14 RACK @ 3' FOR 16-18' BXS
7	1	WATER-PAN-3RD-WHDL	WATER PAN 2.5" X6.75 X
8	1	EL1250-120-HT	ELEMENT 1250 WATT 120 VOLT 8" HT
9	1	58408	HEAT SHIELD USE WITH H2O PAN
10	1	GRD FAN	FAN GUARD
11	1	4011	HUMITEMP BLOWER HOUSING
12	2	BLD FAN AL	FAN BLADE 3" ALUMINUM
13	1	4041	HUMITEMP BLOWER LID
14	1	Z-301-4440 (INCLUDES 15-17)	TS-1633-14 DOOR ASSY EDG/EDG RH
15	2	HNG-214	DOOR HINGE EDGEMOUNT .875"
16	1	LTH-DR	DOOR LATCH EDGEMOUNT STYLE CHROME
17	1	STK LTH 1	DOOR LATCH STRIKE FOR LTH DR
18	1	SWH RCK E1	SWITCH NON-LT ROCKER 125/250V 20AMP
19	1	LT PLT A-G	INDICATOR LIGHT AMBER GREEN 125V
20	1	KNB H6	KNOB WITH ARROW
21	1	T-METER H1	THERMOMETER 100-220
22	1	CNTRL-PNL-HUMI-TEMP-AL	ALUM PANEL FOR HUMI-TEMP
23	1	57710	RECESS CONTROL HOUSING
24	1	T-STAT H1	THERMOMSTAT HEAT CONTRL 90-190 36"
25	1	SLV-ACRYLIC-WHITE-7-16 @ 30"	SLEEVEING ACRYLIC 7/16 ID WHITE FA1
26	1	53454	HUMITEMP LOUVER PANEL W/TABS
27	1	MTR BY120 92	MOTOR DUAL SHAFTED 120 VOLT
28	1	80610	BRACKET MOTOR MNT FOR BAY MTR
29	1	TRM 4QC	TERMINAL BLOCK 4QC



DRAWING #: **TS-1633-14**

DESCRIPTION: **UNIVERSAL SERVER**

DRAWN BY: DP

LAST SAVED BY: dplodzien